

CASE STUDY



QueryMaster AI

Advanced Q&A Training for AI
Chatbots

www.zoondia.com



QueryMaster AI

Category : **Artificial Intelligence**

Location : **Saudi Arabia**

Business Background

A company in Saudi Arabia needed an efficient method to train their chatbot with detailed question-and-answer datasets. Our Q&A training feature allowed them to upload CSV files or manually input queries and responses, resulting in a highly effective and interactive chatbot.



Challenges

- **Limited Dataset Accessibility**

The organization lacked an efficient way to create and upload Q&A datasets.

- **Inconsistent Responses**

Manually curated Q&A led to incomplete chatbot training.

- **Tedious Manual Input**

Inputting large datasets was time-intensive and error-prone.



Approach

Research & Analysis

We analyzed their current Q&A structure and identified the need for batch imports and manual customization.

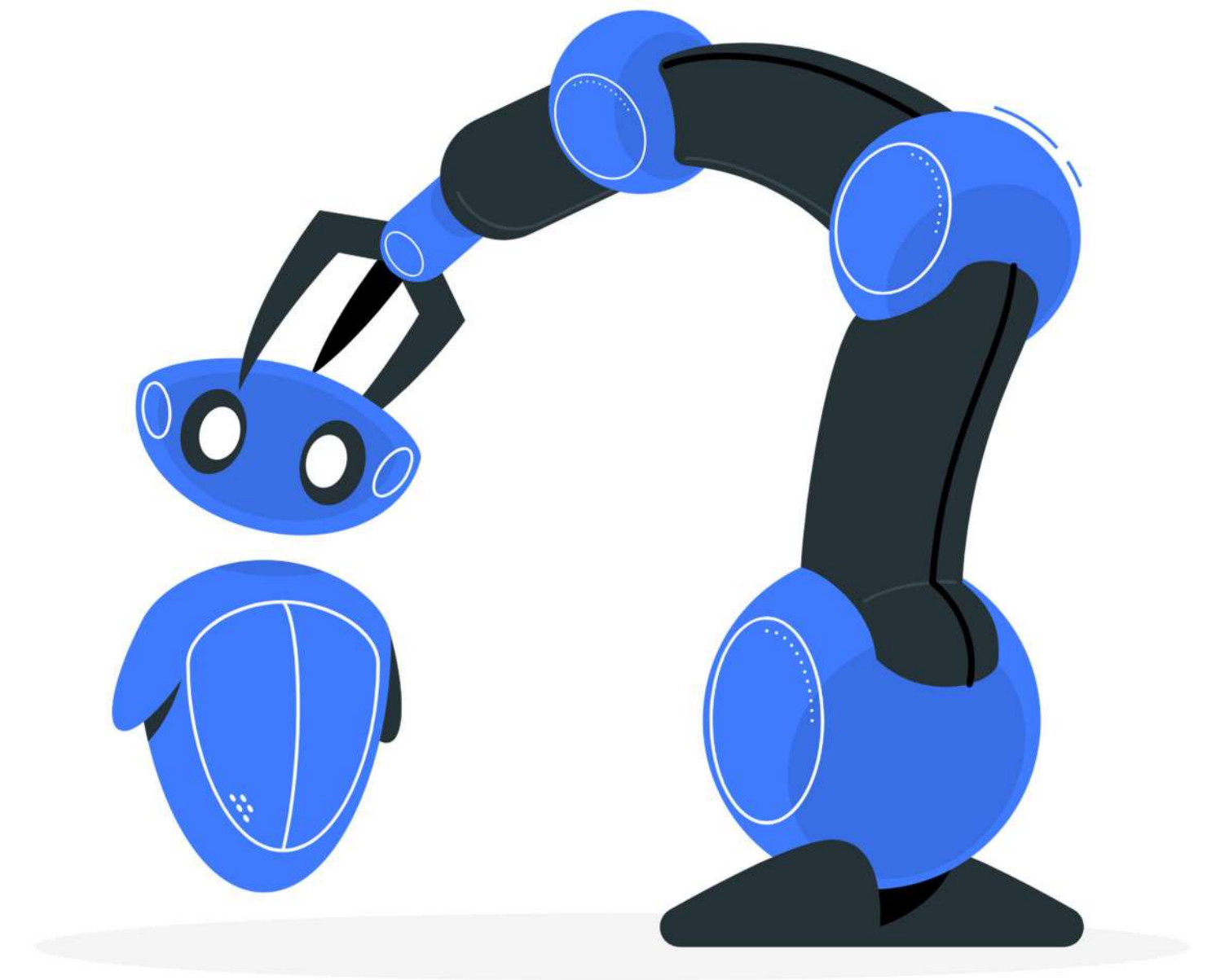
Designing the Solution

Our system allowed users to:

- ▶ Importing pre-structured Q&A datasets through CSV files.
- ▶ Manual addition and editing of individual questions and answers.
- ▶ Real-time testing of the chatbot's responses to ensure accuracy.

Implementation

The solution was equipped with advanced processing to validate and format imported data automatically, reducing errors and improving efficiency.





Results

- **Seamless Dataset Creation**
Q&A imports via CSV improved data integration by 60%.
- **Accurate Responses**
Well-structured training ensured consistent chatbot performance.
- **Time Savings**
Batch processing eliminated tedious manual entry.
- **Customizable Training**
Users could fine-tune the chatbot's responses as needed.

Preferred Industries

The **Q&A Training for AI Chatbots** feature is suitable for:

- **Customer Support**

Train chatbots with FAQs and troubleshooting guides.

- **Education**

Create Q&A datasets for tutoring applications.

- **E-Commerce**

Train chatbots to handle product-related queries.

- **Travel and Tourism**

Provide automated responses for common traveler inquiries.

- **Healthcare**

Train bots with medical FAQs and patient guidelines.



Screenshots

dem
dem@mailinator.com

Questions and Answers

Add or select suggested questions by AI for your chatbot.

Add Manually Import .CSV

Question

tell me about oceans

Answer

The Oceans and Ecological Services The worlds' oceans comprise the largest habitat on earth. 71% of the surface of the earth is covered by sea water to an average depth of 3.8km. The total volume of this water is around 1.3 billion cubic kilometers and comprises around 0.24% of the total mass of the earth. (Angel 1997). These statistics hide a considerable diversity of habitat. The abyssal depths of the ocean between 3 and 6km in depth cover 51%of the surface with depths over 6km accounting for less than 2%. The continental slopes between 200m and3km depth cover 13% of the surface while the continental shelves underlying water up to 200m deep account for 5% of the earth's surface. This huge biological system is richer in major groupings of animals than the land. Of the thirty four major taxonomic groupings (phyla) of animals, twenty nine occur in the sea and fourteen are found exclusively there (Tickell 1997). Coral reefs have long been known to very species rich (Pauley 1997) but new research methods have shown the ocean floors also to be extremely rich in biodiversity (Scheltema 1996; Gage 1997). Quite apart from the commercially valuable species it is increasingly being recognized that this diversity of life has an intrinsic moral as well as monetary value(O'Neill 1997; Oksanen 1997; Moyle & Moyle 1995)

Save Content

dem
dem@mailinator.com

Imported Q&As

+ Add New

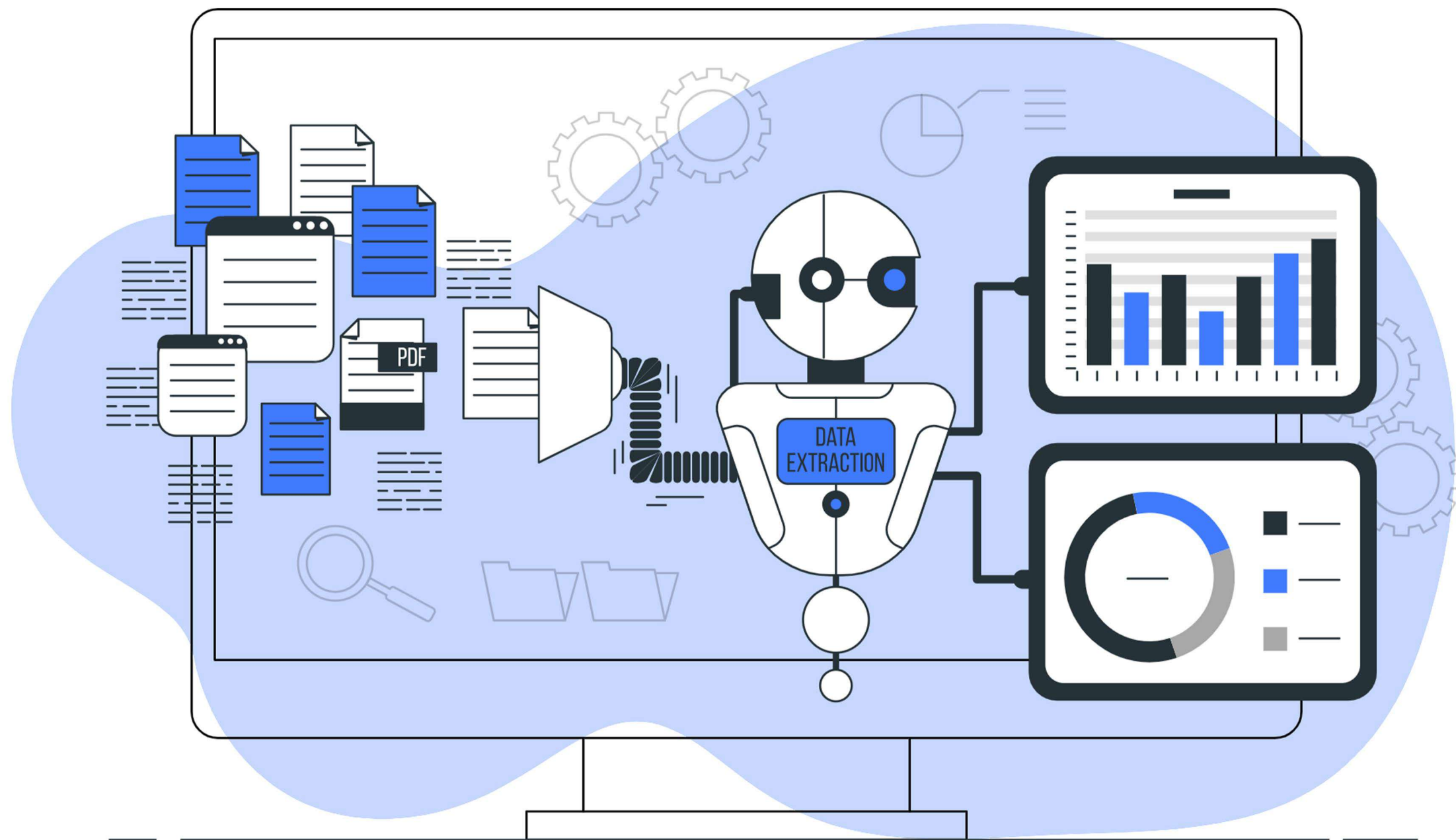
Generate Q&A

tell me about oceans?

The Oceans and Ecological Services The worlds' oceans comprise the largest habitat on earth. 71% of the surface of the earth is covered by sea water to an average depth of 3.8km. The total volume of this water is around 1.3 billion cubic kilometers and comprises around 0.24% of the total mass of the earth. (Angel 1997). These statistics hide a considerable diversity of habitat. The abyssal depths of the ocean between 3 and 6km in depth cover 51%of the surface with depths over 6km accounting for less than 2%. The continental slopes between 200m and3km depth cover 13% of the surface while the continental shelves underlying water up to 200m deep account for 5% of the earth's surface. This huge biological system is richer in major groupings of animals than the land. Of the thirty four major taxonomic groupings (phyla) of animals, twenty nine occur in the sea and fourteen are found exclusively there (Tickell 1997). Coral reefs have long been known to very species rich (Pauley 1997) but new research methods have shown the ocean floors also to be extremely rich in biodiversity (Scheltema 1996; Gage 1997). Quite apart from the commercially valuable species it is increasingly being recognized that this diversity of life has an intrinsic moral as well as monetary value(O'Neill 1997; Oksanen 1997; Moyle & Moyle 1995)

Characters 1354 Cancel Train Contents

"A powerful feature to generate Q&A datasets for AI training. Import CSV files or manually add queries for precise chatbot training."



KEY TAKEAWAYS

The Q&A training feature simplifies chatbot training with structured datasets, ensuring accurate and efficient responses.



Zoondia, 33 Level, Al Saqr Business
Tower, Sheikh Zayed Road, Dubai
Ph: +971 50 272 8681



CR - 152802 Office 703, 7th Floor,
Building 5, Street 905, Mushaireb, Doha,
P.O.Box: 16742
Ph: +974 5511 0799



71-75 Shelton Street, Covent Garden
London WC2H 9JQ
Ph: +447376579575



Florida

Zoondia LLC
4099 LA PLAYA BL VD, Coconut Grove,
Florida, USA 33133

Texas

276 State Highway
16 S #284, Bandera TX 78003
Ph: +1 786 802 5370



Trivandrum

T-2, 7th Floor, Thejaswini, Technopark,
Trivandrum - 695 581
Ph: +91 4714017676

Calicut

Sahya Building, Cyberpark,
GA College PO, Calicut - 673014, Kerala, India
Ph: +91 495 243 5011